



Proposed Season for 2015/2016

Ladies in Retirement by Edward Percy and Reginald Denham

Thriller in 3 acts with 6 females and 1 male

The Kitchen Sink by Tom Wells

Comedy/Drama in 4 acts with 2 females and 3 males

The Witches adapted for the stage by David Wood with Roald Dahl

Scary and sill fantasy with 6 females and 4 males

An Inspector Calls by J. B. Priestly

Drama with 3 females and 4 males

The Birthday Party by Harold Pinter

Drama with 2 females and 4 males

Little Gem by Elaine Murphy

Tragi-comedy with 3 females

'Allo 'Allo by Jeremy Lloyd and David Croft

Farce with 5 females and 8 males

Director's meeting

Monday 9th March at 7:30pm in the Theatre Bar

If you are interested in directing or assisting, or learning, or are just curious how a play gets from page to stage then come to the Director's meeting. Chat about the 2015/2016 season, ask the questions you would like answered and compare notes with others of a like mind. If you ARE interested and unable to make it email me at cardewmag-let@gmail.com. See you there!

Maggie Cardew (Arts Manager 2015/2016)

No unsigned copy will be accepted.

Please use full names (of members or authors, etc) at all times.

Copy deadline is the FIRST Saturday of each play.

Editors email address: postmaster@sleptite.force9.co.uk

Apollo Website: www.apollo-theatre.org.uk



Director's Chat

Amy Burns

amy@masexodus.co.uk or 07886 389 561

2015 has begun with a great production a huge thanks to Di and her cast and crew for bringing such a fabulous story alive on the Apollo stage. If you missed it you missed a real treat, with two performances receiving a standing ovation.

The next couple of plays are cast and rehearsals have started so all is looking good for the rest of this season. Maggie Cardew has set her season (see later in the Apollonius) so thank you to her for reading so many scripts and getting her season up and ready.

Many of you will remember Michael Howley who passed away his will has been read and he kindly left the Apollo some monies. Because of some difficulties with the tax man there are still some problems. So watch this space for what we have got and we will ensure that some of our future works will be dedicated in his memory.

Also don't forget there is always an opportunity to try a new job during the run of a production so if you are interested in a lesson of any role please do contact me (amy@masexodus.co.uk or 07886 389 561) and we will give you an appropriate training.

THE PLAYERS' COMMUNITY OUT-REACH PROGRAMME

Allied to our re-vamped marketing strategy, I have been tasked with the role of a sort of Players' ambassador. To this end I have contacted lots of Island societies offering a tour of the theatre and a simple workshop on Page-to-Stage. The weekday visit (morning or afternoon) takes about an hour and a half and includes an introductory chat in the bar with a cuppa.

So far, I have ten Women's Institutes booked in throughout the year and more showing an interest. If you know of any group who might like to arrange a visit, please contact me.

Michael Arnell, 296388.

DIARY

February

Saturday 28th

An Evening with Flanders and

Swann

7:30pm

March

Sunday 1st

Deadline for subscriptions

Monday 9th

Directors Meeting

Theatre Bar

7:30pm

Saturday 14th

LTG's Southern Region AGM and

Conference

Monday 30th

The Shakespeare Revue

Auditions

7:30pm

DIARY



Membership

Pam Cranfield (pamelacranfield@yahoo.com) 01983 856237

Members: 225

We welcome 3 new members – Benjamin Guerra, Andy Barton and Carol Crew and hope that they will enjoy their membership of the Apollo Theatre.

All those who have either paid their subs by cash/cheque or had their Standing Orders transferred to our bank account, should have received their membership cards for 2015 by now. If not, please contact me and I will ensure another one is sent to you. However, there are many who, at the time of writing (7th February), have not rejoined or whose bank has failed to transfer the money to us. Please ensure that your subs are paid as soon as possible.

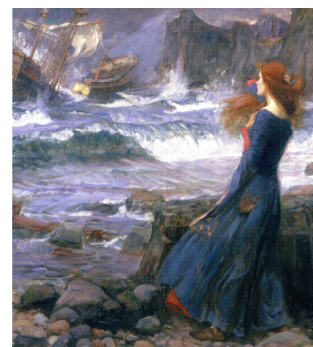
The cut off date for 2015 subs is 1st March so this may be your last Apollonius

Names will be removed from the database on that day and Apollonius will not be sent out to those not on our lists. Please send subscriptions to me at Montecello, Maples Drive, Bonchurch PO38 1NR.

May I remind all Directors that their cast should all be paid up members of the Apollo. Please continue to remind actors etc and, if you are not sure, contact me by phone or email to check their status.

Would anyone, apart from members already cast, who holds a copy of the Tempest script please return it to me as soon as possible.

**Thank you,
Mike Whitehead**



LOST GLASSES!

I have mislaid my favourite glasses somewhere in the theatre. If anyone comes across them, please, please could you let me know? They are prescription ones with pink arms and sort of oblong frames and I'm as blind as a bat without them!

I would be so grateful! Thank you!
Ginnie Orrey gginnie@googlemail.com or 716344



Art's Manager 2014 - 2015

Michael Arnell

296388

From the heart-stopping episode when our application for the Performing Rights for "Streetcar" was initially denied, to the relief when a grovelling appeal overturned that decision, through a busy rehearsal schedule by a dedicated cast, has resulted in a wonderful production.

The set, lighting, sound, the flawless acting etc., etc., is a brilliant example of what the Players are all about. Many congratulations to Di Evans and all concerned.

Isabel's production of "Six Dance Lessons in Six Weeks" is well on course and should prove a delightful theatrical contrast.

The all-day Stagecraft Workshop last month was very well attended and extremely worthwhile. If there is an aspect of stagecraft you would find it valuable to explore, please contact me. A member has already expressed interest in the learning more about Directing a play.

A good number of you will already know me, or at least know of me and for that I sincerely apologise. I have in recent months found myself on the Players Committee once again after a large number of years away from it as a Members Representative. With that in mind I need things to bring to the committee and this requires your input. Do you have something that you would like raised, answered or otherwise brought before the committee. If the answer is yes then please feel free to contact me or alternatively Marilyn Ford who is also a Members Rep. Our primary task is to act as intermediaries between the membership and the committee. It really does not matter how small you may think your say is as it still matters so please contact either of us. It is easier for me if you contact me through e-mail or by putting a letter into the box office pigeon holes which I will check on a regular basis, alternatively catch me around the theatre and I can give you my mobile number. I won't bore you with anything more than that and I look forward to hearing from you should you need me. Contact Details: drew@orange.net



House Manager

Paul Stevens

postmaster@sleptite.force9.co.uk

Thank you to all those who volunteered for front of house duties during 'A Streetcar Named Desire'. Not all the rotas were filled but those that volunteered coped admirably. Thank you to all those who volunteered who were new it was very much appreciated.

Hopefully for the next production we will start scanning tickets. This is going to mean a few changes but don't panic it is very easy to do!!

As always blank rotas for the next production are in the Theatre so if you are in and would like to help please put your name down. And finally if you need training please do not hesitate to contact me.

BIG SCREEN FILM CLUB REVIVED!



As many of you will know, for some years Peter Boffin has run the Big Screen Film Club in the theatre, showing wonderful old movies and Pathé newsreels on a Thursday afternoon. Sadly Peter no longer feels able to carry on doing this, so I have proposed, and the Committee have agreed, that subject to confirmation of license arrangements, I will start up a Big Screen Film Society at the Apollo.

I believe we're badly behind the curve on the concept of film societies. They are springing up all over the Island and I plan to reinvent ours, expanding its audiences, showing different films and generally joining the group of community film societies across the Island. It probably won't make us a lot of money, at least to begin with, but I see it as part of our marketing effort to expand awareness of the Apollo's offering generally.

I plan also to change the club into a wider film society, rather than something solely for members. I propose that we move away from the afternoon performances, which by definition attract a very specific demographic, towards proper evening performances as part of a more structured and enjoyable 'evening out', with the bar opening at 6.00pm offering drinks and snacks and the film going up at 7.00pm.

Most of the things we need are already in place, but I shall need a small but perfectly formed team to support me in this. Just two or three people who are prepared to give up an evening ten times a year (once a month except August and December) to help with front of house, projection and selling teas & coffees, drinks and snacks would make it possible – and of course you'll get to see the films too! I'm working on the list for the first season – starting at the same time as the theatre's 15-16 season – and would also very much welcome proposals for films to include in it.

In the first season we won't go wild on obscure foreign subtitled arthouse films, concentrating instead on films with a 'theatrical' theme plus perhaps slightly less well-known ones which nevertheless won't frighten the horses – perhaps films which have shown at Cineworld but only for a nanosecond, or which don't come round again and people would like to see/see again, with the occasional more obscure one to test the water.

I'm very much looking forward to getting this off the ground, so if anyone is interested in helping me, do please get in touch on gginnie@googlemail.com or 716344 or 07837 642868. **Ginnie Orrey**

Are you missing out?

Some members are still missing out on the free 'perk' of being able to take NOT ONE, NOT TWO BUT AS MANY POSTERS AS THEY CAN GET DISPLAYED. You may not have a window where people would see it, but could you put an A4 poster in your car? Do you have a noticeboard at work, a friendly shop nearby or a café you use? Don't miss out on this offer as it is sure to be in demand. By the way if you wanted to display a 'poster on a stick' in your garden/grounds Roger Simpson is happy to craft a bespoke noticeboard just for you!

Thanks to all of you who already take posters and welcome to the team some new people. It would be a great help if when you collect your posters you could make a note on the clipboard of how many and what size you want.

Posters for 'Six Dance Lessons' are now available in the foyer. If getting into the Theatre to pick posters up is stopping you let me know and I can arrange to get them to you. **Kate Fysh 717618, katefysh@gmail.com**

The Shakespeare Revue

3rd to 4th July and 7th to 11th July

Revue or Variety

An entertainment consisting of a series of items. A quantity of short performances including singing solo or in a group. Requiring a certain degree of holding a musical line but even more so possess a versatility of acting, to work solo or in small groups.

The cast will consist of 5 males and 5 females who must work together as a team and be able to display a certain amount of tongue in cheek humour and playfulness.

Auditions will be held on Monday 30th March in the Theatre at 7:30pm. Please bring something to sing.

There are no small parts. **Alain Smith**

A bit of a 'gush'

I am not, as a rule, given to 'gushing but I feel , on this occasion, a bit of a 'gush' coming on.....so if you can't face that.....

STOP READING NOW !

I have directed a fair few plays at the Apollo.....always enjoyable but some were special to me. 'Streetcar' was special.

It was special because I have wanted to direct it for quite a while and Michael's open season gave me the chance to do so.

It was special because I then discovered there were amazing actors for my lead roles who were also passionate about the play and were prepared to do anything to make it the best we could.

It was special because I was then able to persuade a team of talented and experienced actor who were willing to take on miniscule roles. Without their support the play would not have happened.

It was special because the set builders turned my pathetic sketch plan into a space that worked so well for the play.....Then along came Michael and Paul with their magic paintbrushes and transformed it into a home for Stanley and Stella.

It was special because the costume and props team used their usual skill and imagination to take the set and actors back to the late 1940s in New Orleans.

It was special I worked with Tristram and Taryn for the first time and loved the lighting and sound they created to support the action .

And finallyit was special because I had the very special team that is Amy and Dan sweeping away any problems.....oops!.....I mean challenges.

My thanks and love to everyone, **Di xx**

Sheerluck Holmes

I apologise for not getting anything in the Christmas Apollonius but I was rather busy! Sheerluck Holmes proved to be a very successful production. We had good houses for each performance and all the cast enjoyed themselves, which is what it is all about.

We had more than our share of bad luck with the cast suffering loss of loved ones, serious illness in the family which took them away from us. One of our cast, a young autistic lad, just found it all too much and had to drop out. To top it all on our second performance our pianist was in hospital.

Despite this, with the cast willing to step into parts and dear Rosie Baker stepping into the breach, (and making an excellent job!) the show went on!

The children shone especially in their own dance number fantastically choreographed by Alain Smith. They can't wait to perform again.

I would like to say a big thank you to everybody who helped in any way.

Gwen Stevens

100 Club

I find that I haven't reported on the winners of the 100 Club since before Christmas. However, The winners for November and December were Bill Buckell and George King respectively and it seems that, because I've not been well and have hardly been in the theatre, we still have to do the Draw for January. We'd must do that asap because in just a few weeks' time the February Draw has to be done for the second largest prize money of £250.

Forms are still available in the Foyer for anyone willing to contribute £5 a month into the kitty in the hope of winning either the more frequent £50 monthly Prize except for February when the prize is £250, or £500 at the end of August. You will then be supporting the Apollo Trust in its important work of looking after our beautiful Listed Building and upgrading its equipment.

If you are filling in a Form to join the 100 Club please don't forget to send the appropriate part to your Bank and also leave a slip at the Box Office to tell us you have done so, or telephone me on **527606**.

LTG News

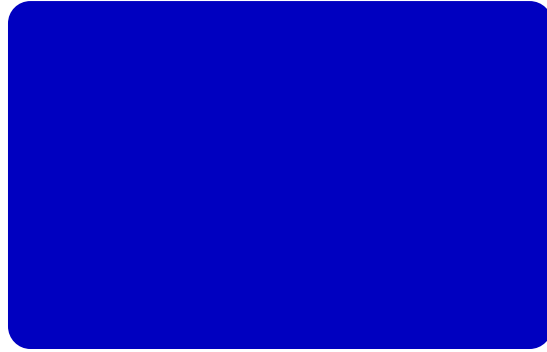


The LTG's Southern Region AGM and Conference will be a one-day affair at Rainham, Kent on 14th March. The original Theatre had to pull out because of building works just at the wrong time.

If anyone is interested in going please let me know and I can send you the paperwork.

Cynara – LTG Rep Tel:- 527606 or email cynara.crump@virgin.net

If undelivered, please return to: Apollo Theatre, Pyle Street, Newport,
Isle of Wight, PO30 1JT



**Apollo
Theatre**
PYLE STREET • NEWPORT

☎: 01983 527267 43rd Season

Six Dance Lessons in Six Weeks



The Apollo Players
present

Thursday 27th to Saturday 28th March
and
Tuesday 31st March to Saturday 4th April
7.30 pm

Box Office Open Daily ☎: 01983 527267
From Saturday to Saturday (except Sundays)
between 11 a.m. and 2 p.m. and from 6.45 p.m. during the run

For information and booking online go to
www.apollo-theatre.org.uk

by Richard Alfieri